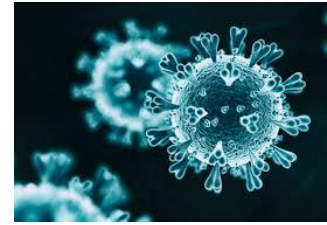




COVID-19 Protocols



Daily Screening Tool for Parents and Staff

Every morning before you send your child to school please check for the following:

- ⚠ Does your child have a temperature of **100.4 degrees** or greater?
- ⚠ Does your child have any other signs of COVID 19?

Please note the following changes: Early signs of COVID 19 are often more subtle and can include: *Congestion, runny nose, sore throat, fatigue and headache*. If your child is suffering from any of these symptoms, please keep them home and consult your healthcare provider.



- ⚠ Was your child in close contact (within 6 feet for more than 15 minutes) with anyone confirmed with COVID-19 within the last 2 weeks?

✗ If the answer is **YES** to any of these questions, **DO NOT** send your child to school. Instead, begin quarantine of your child and contact your healthcare provider. Strongly consider COVID-19 testing.

STOP If **you or your** child has been tested for COVID19 **DO NOT** send your child to school until the results have been obtained

- ⚠ If you child has travelled please consult with the school nurse for additional guidance.

COVID-19: When a student, faculty or staff member can return to school



Individual	Symptomatic (Key COVID 19 Symptoms)	No Symptoms
Not tested for COVID-19, No known exposure to COVID19 WITH alternate explanation (strep, influenza etc. as determined by a doctor)	May return to school after 24 hours resolution of fever without fever reducing medications AND written documentation is provided by a medical provider offering an alternate medical diagnosis and the provider indicates it's appropriate for the patient to return to school	N/A
Not tested WITHOUT alternate explanation	Must remain home for at least 10 days from the first day symptoms appeared AND be 24 hours fever-free without fever reducing medications and with improvement of symptoms Note: If symptoms experienced are those listed in blue on the front symptom list, the child MAY be able to return to school sooner than 10 days – MUST consult with school nurse for additional guidance.	N/A
Tested Negative	The individual can return to school with a negative test AND consultation with school nurse regarding any additional follow-up.	May proceed with attending school. EXCEPTION: A known close contact (within 6 feet of a confirmed case for more than 15 minutes) must complete a 14-day quarantine, even if the test is negative.
Tested Positive	Must remain home in isolation for at least 10 days from the date symptoms began AND be 24 hours fever-free without fever reducing medications and with improvement of symptoms.	Isolate at home for 10 days from when the test was taken. If the individual develops symptoms, MUST isolate for at least 10 days from the date symptoms began AND be 24 hours fever-free without fever reducing medications and with improvement of symptoms.
Close Contact (within 6 feet for 15 minutes or more with a confirmed COVID – 19 case)	N/A	Quarantine for 14 days before returning to school. Must remain symptom free. If individual develops symptoms, then refer to the symptomatic scenarios.

